

Aremco offers a complete line of electric box furnaces from 0.5 to 7.5 cubic feet for applications to 2350 °F. All furnaces are ruggedly constructed and energy efficient, and a wide range of temperature controls are offered for every type of use. Custom features and sizes are also available upon request.

PRODUCT HIGHLIGHTS

- All furnaces are built with 3" premium insulating firebrick and 1" fiber board to permit rapid firing.
- Elements are protected in dropped recessed side wall grooves to provide even heating, longer life, and easy replacement.
- Outer shells are constructed using stainless steel to improve the casing resistance to high temperatures.
- Front-loading and top-loading door styles are offered.
- Alternate power requirements for domestic and international use are easily accommodated.
- Replacement elements are available on a just-in-time basis.
- User-friendly programmable controller.

TYPICAL APPLICATIONS

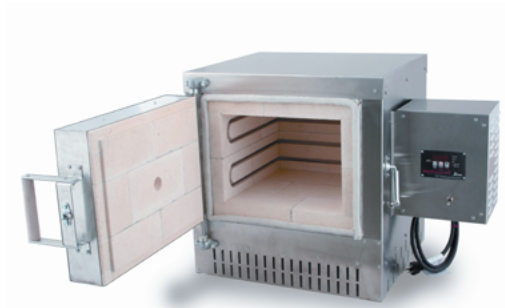
- Ash Determinations
- Assaying
- Tempering
- Hardening
- Heat Treating
- Glass Annealing
- Melting
- Fusions
- Dry Precipitates
- Curing Plastics
- Thermal Cycling
- Carbon & Sulphur Tests
- Cement Tests
- Glass & Enamel Tests
- Jominy Hardness Tests
- Petroleum Tests
- Powder Metallurgy
- Thermocouple Standardization
- Ceramic Tests
- Ignitions

TEMPERATURE CONTROLLER

All Econo-Heat™ furnaces are built using the Sentry Xpress 4.0 Temperature Controller by Orton. This controller is a 3-button, 4-segment LED controller that provides 5 built-in speed settings (ramp rate) and the capability to store up to 4 programs with a maximum of 8 segments per program. This flexible, user-friendly controller enables quick and easy programming by the operator.

OPTIONS

Econo-Heat™ furnaces can be modified to include useful features such as view ports, entry holes, or gas intake and exhaust fittings. Larger area and ultra-high temperature furnaces are also available. Contact Aremco's sales engineering department to discuss your requirements.



Econo-Heat™ 2928 Furnace. This model has a work area of 13" x 13 1/2" x 8 3/4" and is equipped with a single set point analog temperature controller.



The Econo-Heat™ furnace shown is a custom unit designed for an aerospace manufacturer for use in heat treating. This furnace has a work area of 42" x 42" x 65", and a unique temperature control system consisting of 21 elements each with its own infinite control switch to permit uniform heating of complex shapes.



Econo-Heat™ 2931 Top-Loading Furnace. This model has a work area of 17" x 20" x 17" and is capable of 2400 °F operation using single phase service, 240 Volts and 40 Amps.

ECONO-HEAT™ 2900-SERIES FURNACE SPECIFICATIONS

Model No.	Size (W" x D" x H")		Style		Power			Maximum Temp. °F (°C)	Approx. Weight (lbs)	Heating Elements Per Unit
	ID	OD (Approx)	Front Load	Top Load	Volts	Amp	Phase			
2927	8.5 × 9 × 8.75	16.5 × 17 × 21.75	X		120	15	1	2350 (1288)	80	2
2928	13 × 13.5 × 8.75	21 × 21.5 × 21.75	X		240	15	1	2350 (1288)	110	2
2929	22 × 22 × 13.5	30 × 30 × 26.5	X		240	45	1	2350 (1288)	295	3
2930	15 × 18 × 15	29.5 × 29 × 29		X	240	30	1	2350 (1288)	280	4
2931	17 × 17 × 20	31 × 31 × 31		X	240	40	1	2350 (1288)	300	4
2932	21.5 × 21.5 × 24.5	31 × 36 × 35		X	240	45	1	2350 (1288)	410	5

Refer to Price List for complete order information.

Aremco Products makes no warranty express or implied concerning the use of this product.

The user assumes all risk of use or handling whether or not in accordance with directions or suggestions, or used singly or in combination with other products.